

Dear Voter,

Thank you for taking the time to read this. Here, you will find the most recent information about the new voting system in Schenectady County.

The ES&S intellect DS200 Digital Image Scanner is a paper based tabulation system. New York State Election Law and the Help America Vote Act (HAVA) mandate that all public elections have a verifiable paper trail.

Please be advised, this is not computerized voting or "e-voting". Once your private ballot has been marked, scanned and deposited in the ballot bin, it will be retained by the Board of Elections in the event a re-count is necessary.

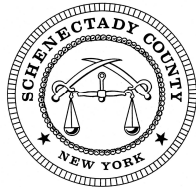
We have every confidence in this new voting system, and we encourage all voters to become part of the democratic process by voting in this upcoming election. Feel free to visit or call us for more information during normal business hours at the Schenectady County Board of Elections.

Sincerely,

Brian L. Quail

Art Brassard

Election Commissioners



voteschenectady.com

Schenectady County Board of Elections

518-377-2469

Schenectady County Board of Elections
388 Broadway, Suite E
Schenectady, NY 12305
518-377-2469



The
NEW WAY TO VOTE
in
Schenectady County, NY

Introducing the...

**ES&S intElect DS200
Digital Image Scanner**



Schenectady County Board of Elections

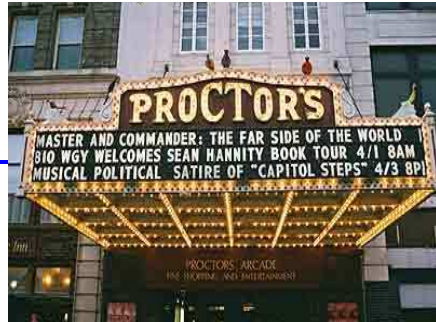
388 Broadway, Suite E

Schenectady, NY 12306

518-377-2469 ~ voteschenectady.com

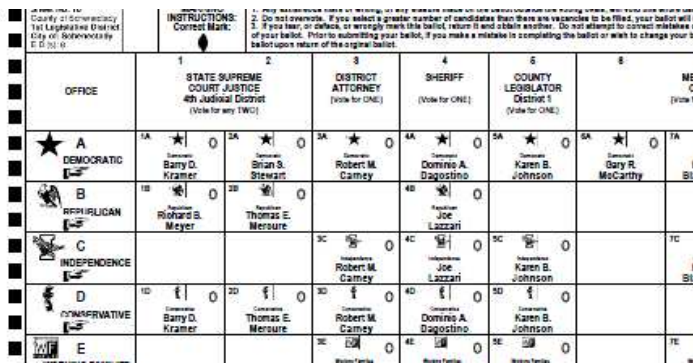
Election Commissioners

Brian L. Quail ~ Art Brassard



Quick Start Instructions for using the ES&S intElect DS200 Digital Image Scanner

1. STEP ONE: RECEIVE YOUR BALLOT



Receive ballot from poll worker. You may receive a privacy sleeve to shield your votes from view.

2. STEP TWO: MARK YOUR SELECTIONS



For every contest, make the selection of your choice. It is important that you mark your ballot properly. Please follow instructions on how to mark your ballot.

3. STEP THREE: INSERT YOUR BALLOT INTO THE ES&S DS200 DIGITAL IMAGE SCANNER

Insert your ballot into the scanner.

The DS200 will accept ballots in any orientation, for example, backward or upside down.



4. STEP FOUR: REVIEW THE SCREEN

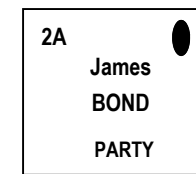
Check the display screen to see whether there are any issues with the ballot such as over voting and blank ballots.

If you wish to have your ballot returned to make changes, select "Don't Cast-Return" on the touch screen. If you'd like to override the on-screen message and submit your ballot as-is, select "Cast Ballot" on the touch screen.

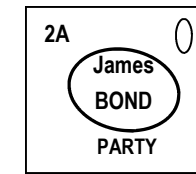
The display screen will notify you when your ballot has been successfully cast.



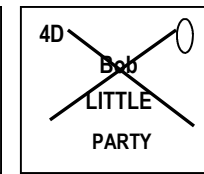
HOW TO MARK A BALLOT CORRECTLY



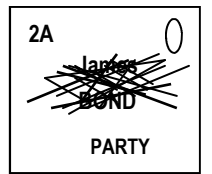
CORRECT!



WRONG



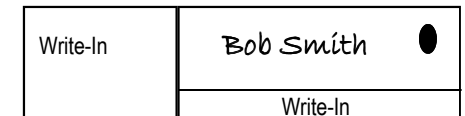
WRONG



WRONG

Mark your ballot by following the example above.

For write-in candidates, fill in the oval. Above the words "WRITE-IN" write the candidate's name in the box.



If you have any questions regarding your ballot, please ask an election official for clarification before depositing your ballot into the DS200.

If you make a mistake in marking your ballot, please ask the election officials for a replacement ballot.